



32 Alison Avenue Warrnambool VIC

3 1 1

Set on a generous 654m2 allotment, this home offers options to move in and enjoy or renovate and extend into the rear garden or up (STCA). This property offers the most unbelievable ocean views and is located close to schools, early learning centre, Hopkins River and a stroll to the beach.

The home comprises of:

- Three bedrooms.
- Kitchen with views and electrical appliances.
- Bathroom with shower and WC.
- Lounge area.
- Separate laundry.
- Single garage with bungalow.
- Large deck overlooking the ocean and large undercover

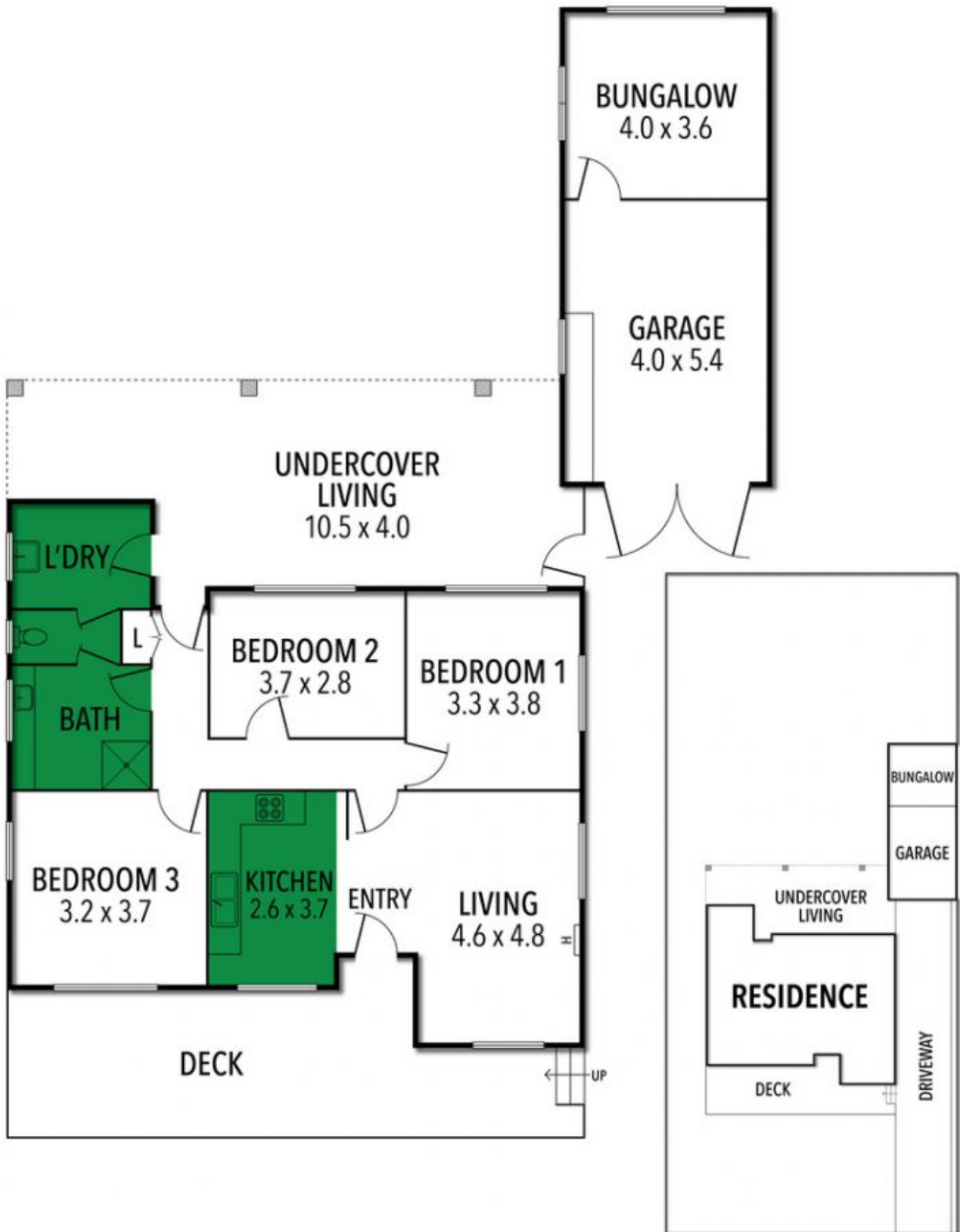
[For full version visit the website](https://www.falk.com.au)

Type : House
Price : \$420,000 to \$445,000
Land Size : 654 sqm
View : <https://www.falk.com.au/sale/vic/warrnambool-port-fairy/warrnambool/residential/house/8161628>



Gary Attrill
03 5561 1677

32 ALISON AVENUE, WARRNAMBOOL, VIC



Falk & Co

INTERNAL 89 SQM APPROX

THE ABOVE PLAN IS AN ARTIST'S IMPRESSION ONLY, IT INCLUDES ELEMENTS THAT ARE FOR DISPLAY PURPOSES ONLY AND MAY NOT BE TO SCALE.
LANDSCAPING SHOWN IS INDICATIVE ONLY. DIMENSIONS ARE APPROXIMATE.