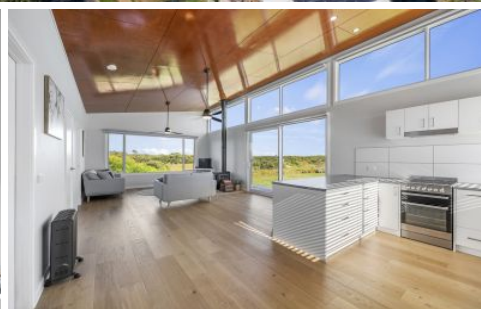


Falk & Co



20 Suttlej Court Peterborough VIC

2 1

This charming coastal haven offers a once-in-a-lifetime opportunity to own the seaside property you've always dreamed of.

The modern open-plan living, dining, and kitchen area features soaring ceilings adorned with highlight windows that invite natural light, and a cosy wood fire for those chilly evenings. Fall asleep to the soothing sound of crashing waves in one of the two inviting bedrooms, both with BIRs, serviced by a central bathroom. The functional kitchen is well-appointed with quality appliances, ample storage, and a breakfast bar, perfect for preparing family feasts, with alfresco dining on the deck to follow.

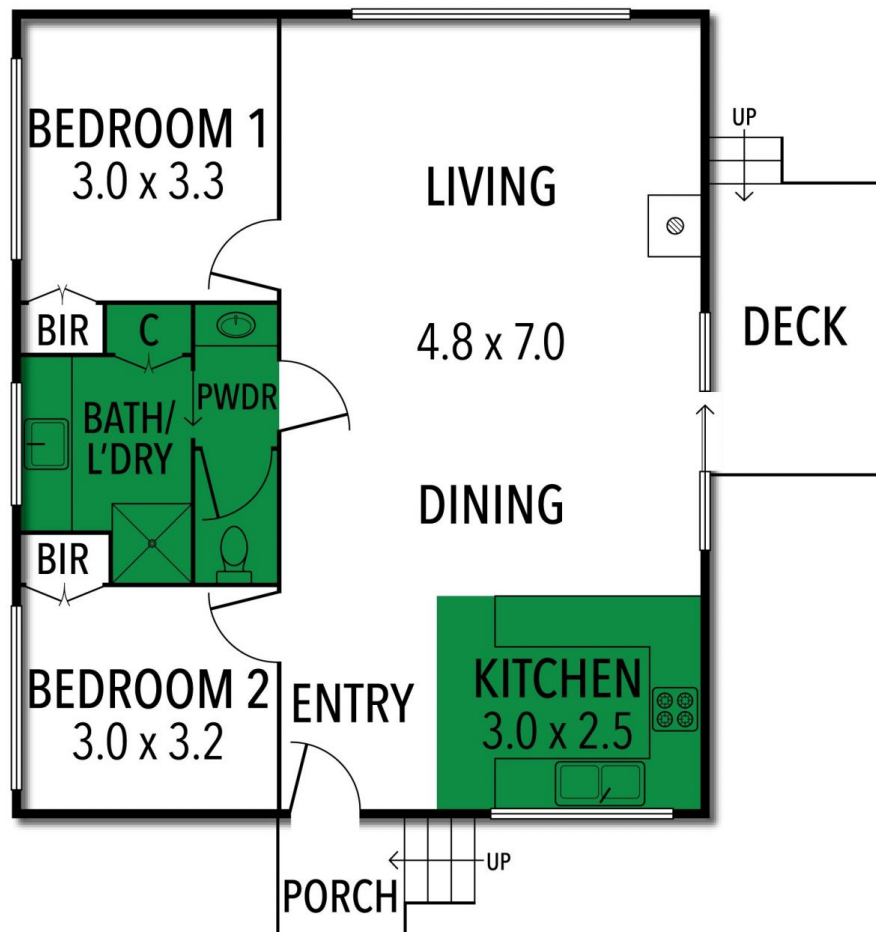
Just meters from the beach, you'll enjoy access to Peterborough's picturesque walking and cycling track, which follows the coast to the Bay of Martyrs, revealing

Price : \$730,000
Land Size : 480 sqm
View : <https://www.falk.com.au/sale/vic/great-ocean-rd-otway-ranges/peterborough/residential/house/8114622>



Gary Attrill
03 5561 1677

20 SUTLEJ COURT, PETERBOROUGH, VIC



Falk & Co

INTERNAL 73 SQM APPROX

THE ABOVE PLAN IS AN ARTIST'S IMPRESSION ONLY, IT INCLUDES ELEMENTS THAT ARE FOR DISPLAY PURPOSES ONLY AND MAY NOT BE TO SCALE.
LANDSCAPING SHOWN IS INDICATIVE ONLY. DIMENSIONS ARE APPROXIMATE.