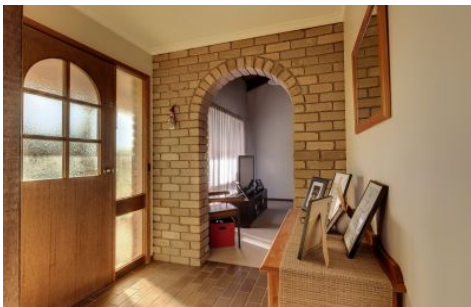





Falk & Co



2 Karana Drive Warrnambool VIC

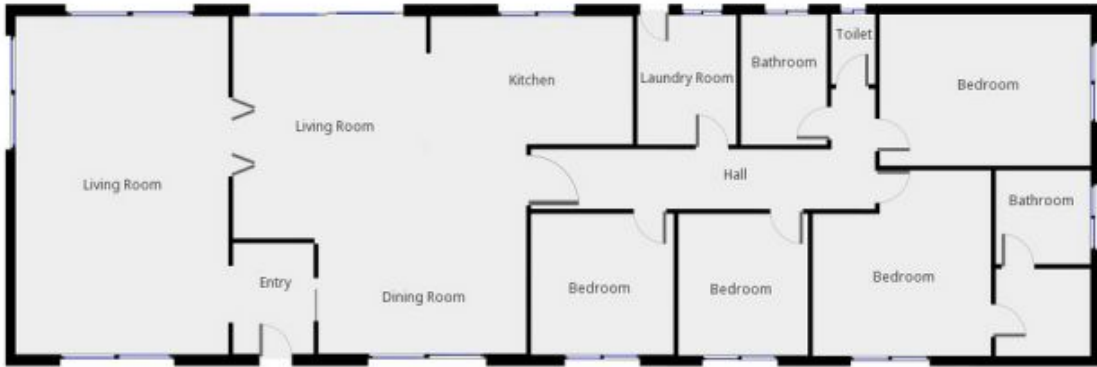
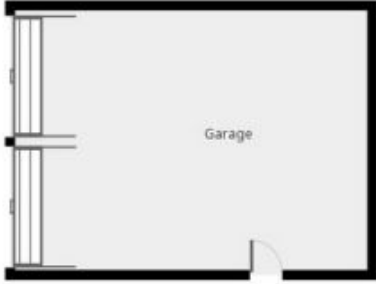
4  **2**  **2** 

This comfortable 4 bedroom home is ideally situated in a North/West Warrnambool. The large main bedroom has both WIR and ensuite, the other 3 bedrooms all with BIR. Open plan kitchen and dining, featuring a dishwasher, electric hotplates, walk in pantry and electric wall oven. Lounge with north facing sunlit areas, gas heating and split system. Main bathroom with separate shower and bath, separate laundry and a double garage with additional storage. You can park your caravan onsite or walk the kids to school from this very comfortable, well kept and well positioned home.

Land Size : 633 sqm

View : <https://www.falk.com.au/lease/vic/warrnambool-port-fairy/warrnambool/residential/house/7941785>

Enquire here to find out how to apply



THIS FLOORPLAN IS PROVIDED WITHOUT WARRANTY OF ANY KIND. SENSOPIA DISCLAIMS ANY WARRANTY INCLUDING, WITHOUT LIMITATION, SATISFACTORY QUALITY OR ACCURACY OF DIMENSIONS.