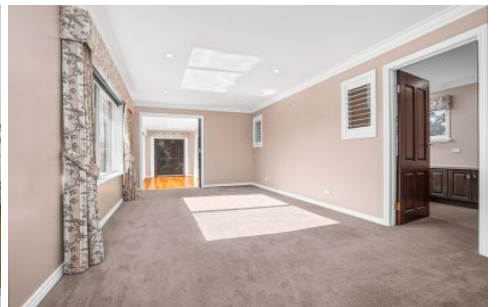


# Falk & Co



**1015 Ayresford Road Terang VIC**

4 1 2

Located just 10 minutes south of Terang and 30 minutes from Warrnambool is this amazing property in the states most reliable rainfall districts. The property consist of 343 acres of prime dairying country in the heart of the Great South West of Victoria, adorned with a magnificent 4 bedroom brick family home all with built in robes, sun room overlooking the swimming pool, central family bathroom, open plan kitchen dining and family room, formal sitting room, 2nd family room, study, plenty of storage through and a double garage not to mention the swimming pool area. The home is set amongst many beautiful English trees offering a sanctuary.

The farm offers a 60 stand rotary dairy with cup removers, auto feed system, 17500 liter Milk Vat, office area, toilet

[For full version visit the website](https://www.falk.com.au/sale/vic/great-ocean-rd-otway-ranges/terang/residential/rural/7681313)

**Type** : Rural  
**Land Size** : 343 Acres  
**View** : <https://www.falk.com.au/sale/vic/great-ocean-rd-otway-ranges/terang/residential/rural/7681313>



**David Falk**  
03 5561 1677

<https://www.falk.com.au>

# 1015 Ayresford Road, Taroon

1015 Ayresford Road, Taroon  
FLOORS: 1

## ▼ Ground Floor



The measurements provided in this real estate floor plan are intended to serve as a general guide and for marketing purposes only. While every effort has been made to ensure accuracy, these measurements are not intended to be relied upon for any purpose, and should not be considered a guarantee of precise dimensions or square footage.

# Falk & Co